

Introduction to MnDOT

Eyoab Zegeye, Ph.D., P.E.

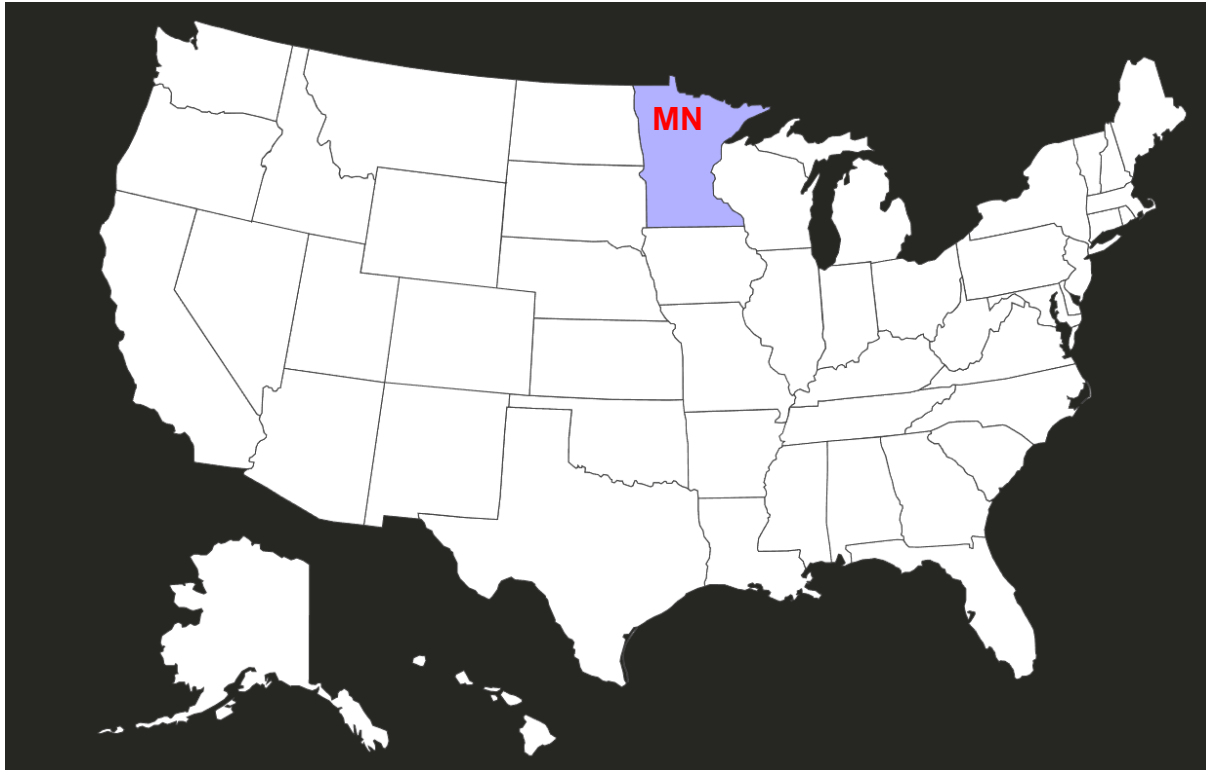
eyoab.zegeye@state.mn.us

MnDOT Office of Materials and Road Research (OMRR)

Thank You



Minnesota Department of Transportation (MnDOT)



Trucks, Buses, Limos, STS



Transit



Cars



Rail



Aeronautics



Waterways



Bikes

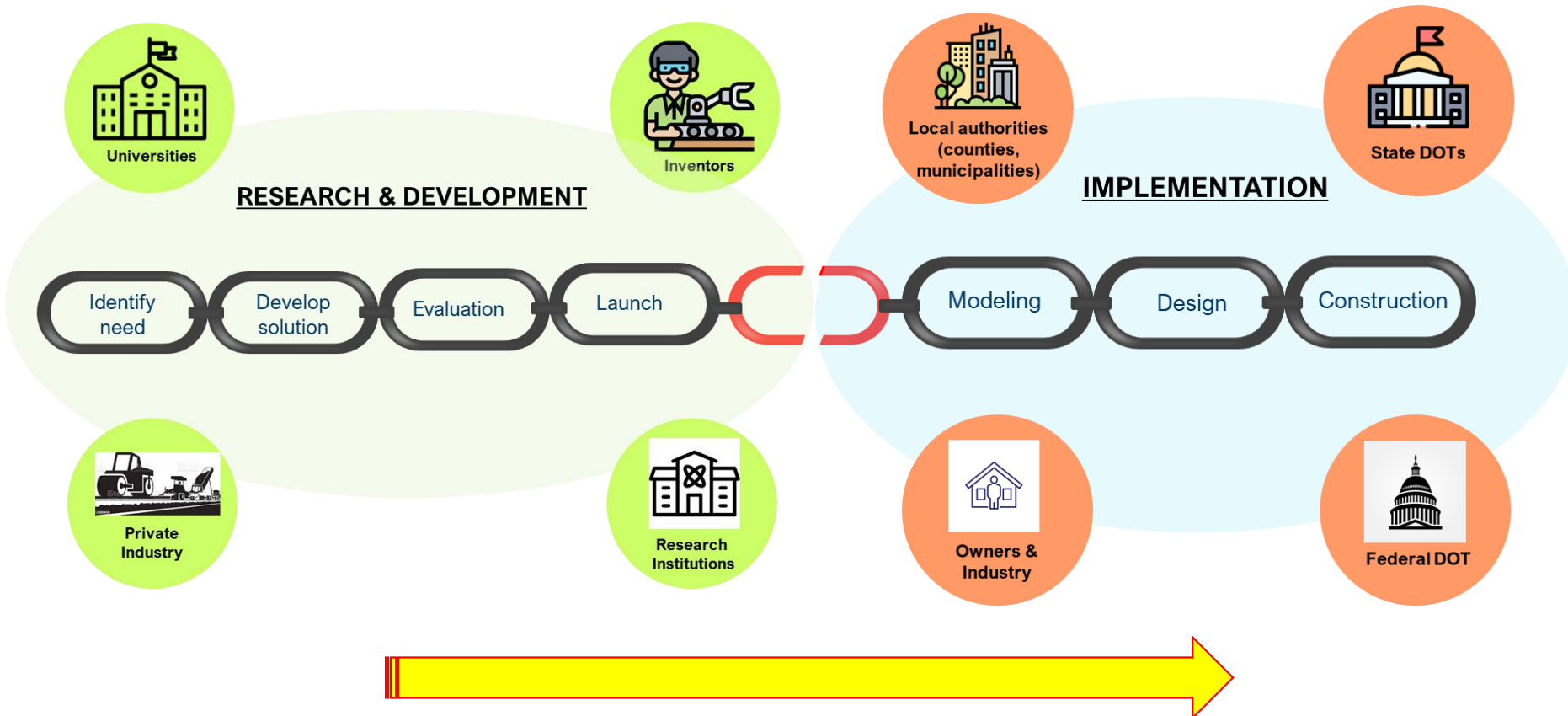


Pedestrians

- ❑ The state's primary transportation authority
 - Trunk highway system: 12,000 centerline miles

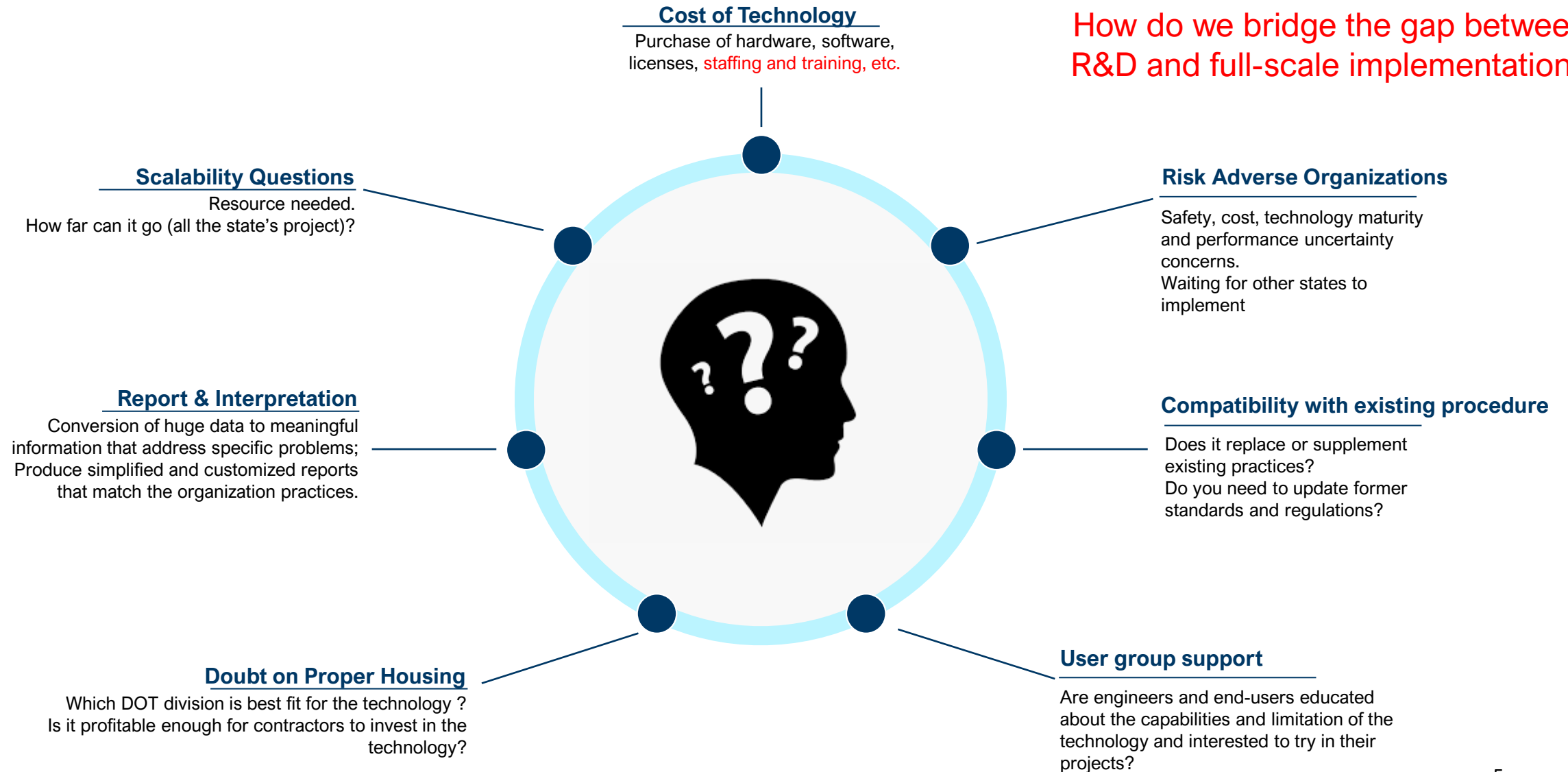
Challenges Adopting Innovative Technologies in DOTs

The transition from R&D to implementation not always smooth



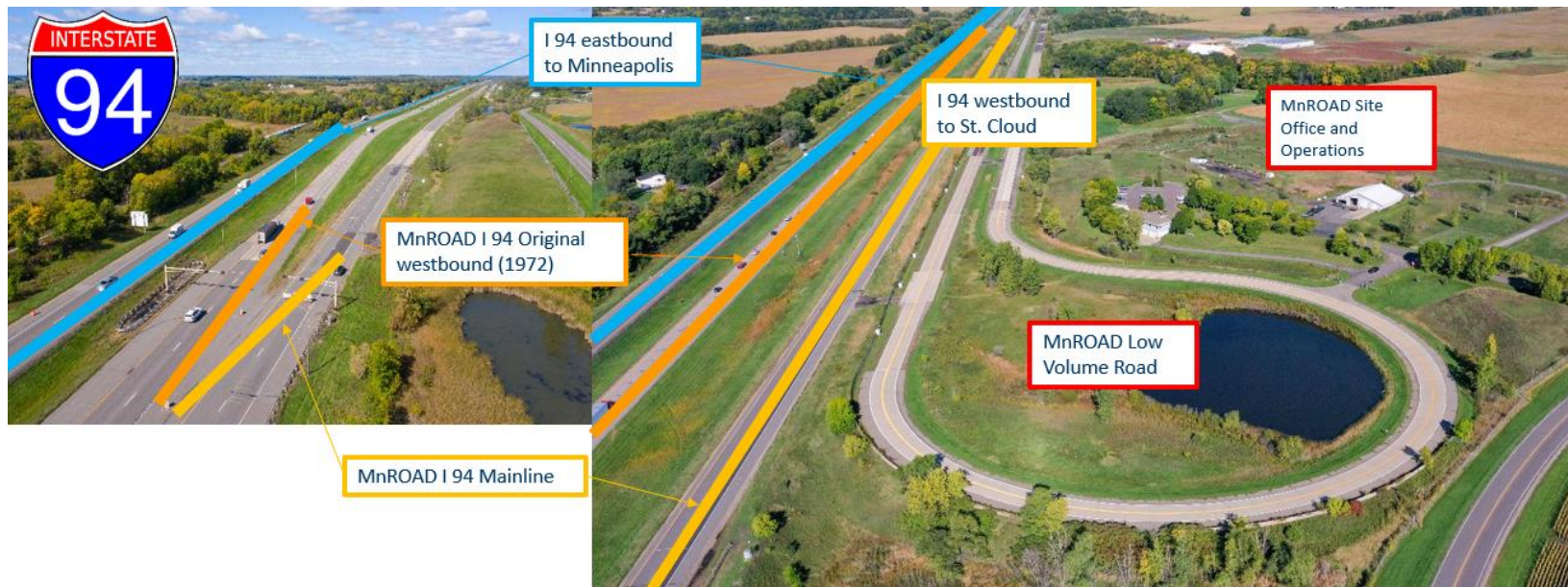
Challenges Adopting Innovative Technologies in DOTs

How do we bridge the gap between R&D and full-scale implementation?



Bridge the Gap Between R&D and Implementation

- ❑ MnROAD Facility - Owned and Operated by MnDOT
 - In 2022 MnDOT provided \$5 million for new reconstruction phase
 - NRRA provides ~\$1million/year
 - 92 sections instrumented with 8500 sensors



Bridge the Gap Between R&D and Implementation

❑ Other key research implementation efforts

Veta Data Management Platform



DPS for Continuous AC compaction

DPS for Continuous Asphalt Mixture Compaction Assessment

National Pooled Fund TPF-5(443)

[DPS Pooled Fund](#) [Contact Us](#) [National Road Research Alliance](#) [MnROAD Home](#)

Continuous Asphalt Mixture Compaction Assessment Using Density Profiling System (DPS) [TPF-5(443)]



Bridge the Gap Between R&D and Implementation

Road Doctor[®] 3

Examiner



Thank you

Any Questions or Comments?

